

**Titled land  
with  
Turnkey  
Move In  
Pack**

**1 WEEK TO  
CONTRACT**



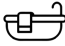

**8 WEEK TO  
SITE START**

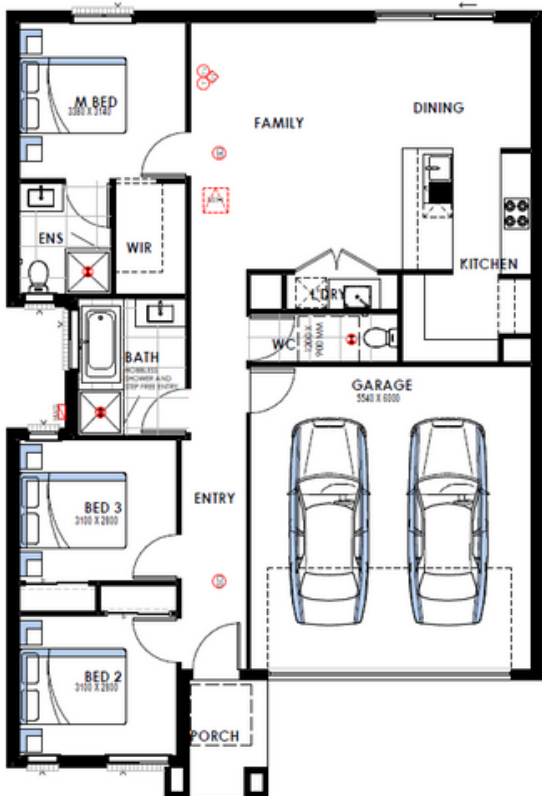
**20 WEEKS TO  
COMPLETION**

Where facade shown, facade may represent offered facade but on different house type and facade colours and materials that may not be available due to land estate guidelines. Price excludes tiles, stone and/or full render to facade treatment, timber windows, landscaping, fencing, driveway, decking, planter box and decorative lights or any change required by Developer to facade. Speak with our New Home Consultant for clarification.

**5AB HOMES**  
FABulously BUILT

### FLOOR PLAN\*

 **3 BDRM**       **306 SQM**  
 **2 BATH**       **2 CARS**



## HOUSE & LAND PACKAGE \$623,000.00\*

**MOONSTONE 18**

**LOT 1607 MOONSTONE ROAD, DONNYBROOK**

## PREMIUM INCLUSIONS

- Fixed Site cost\*
- Estate covenants
- NCC 2022 compliant plan
- Double Glazing windows throughout
- 2590 high Ceiling
- Stone Benchtops
- Downlights
- Flooring throughout (12mm Laminate in the open areas and carpet in the bedroom)
- 600x600 porcelain Tiles in the wet areas
- Brick infill above the garage and windows
- Block out Roller blind to all Windows
- Full Turnkey Package includes :-
  - Front & rear External Landscaping 5ab Standards
  - Coloured concrete Driveway (up to 30SQ)
  - Clothes Line
  - letterbox
  - Plain concrete around the house (Max 1m Wide)

## CONTACT

**MAHESH**

**PH: 0455 061 115**

**EMAIL:MAHESH@5ABHOMES.COM.AU**



ANOTHER DENNIS  
FAMILY COMMUNITY

\*Based on land price provided by Developer as of the said date. All land enquiries to be made direct to Developer. Land is sold separately by Developer. Home price based on a portfolio range home, portfolio inclusions with no changes. Home price does not include additional costs for delay in land titles. \*Fixed site cost is the part of portfolio promotion. Photography and illustrations to be used as a guide. Additional cost fixtures & fittings may be shown. House Dimensions are for fixed base floorplan and do not take into consideration any structural changes. \*Floor plan shown will vary from façade image shown. All H&L packages are subject to Developers approvals. Any changes to the house windows could impact the energy efficiency and may occur additional cost to meet the NCC 2022. \*T&C's apply. The \$25K rebate on the land prices are for limited time only and will be decided availed by the developer at the time of settlement.