



**NOW INCLUDES
FLOORING AND
COOLING
— AT —
NO ADDITIONAL
COST****

Life's better

WITH VICTORIA'S NO.1 HOME BUILDER

FIXED PRICE

\$600,300*

Images for illustrative purposes only & may depict upgrade options available at additional charges such as lighting, window furnishings, timber look garage door & timber windows. Pricing also excludes features not supplied by Carlisle, inc fencing, landscaping, letterbox, decking & driveway. Façade details inc entry door, window sizes & placements may vary between house types & sizes. Refer to working drawings for specific locations and sizes.

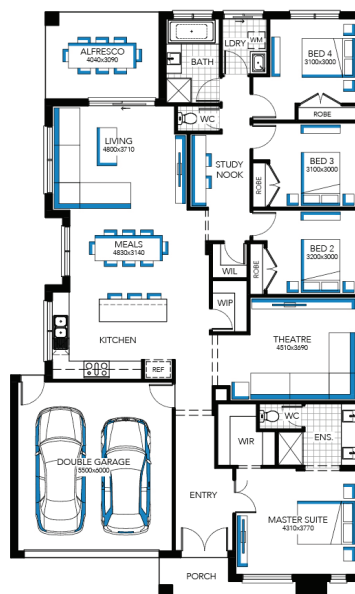


OUR NEW HOME INCLUSIONS
JUST GOT BIGGER

- ✓ FIXED PRICE SITE COSTS AND CONNECTIONS
- ✓ DEVELOPER AND COUNCIL REQUIREMENTS
- ✓ FLOORING THROUGHOUT
- ✓ EVAPORATIVE COOLING
- ✓ YOUR CHOICE OF FAÇADE FROM ENTIRE RANGE AT NO EXTRA COST
- ✓ DELUXE ELECTRICAL PACK
- ✓ 20MM CAESARSTONE BENCHTOPS TO KITCHEN
- ✓ 20MM CAESARSTONE BENCHTOP TO ENSUITE
- ✓ 40MM CAESARSTONE EDGE WITH WATERFALL END PANELS TO ISLAND BENCH (DOUBLE STORIES)
- ✓ STAINLESS STEEL DISHWASHER
- ✓ CLEAR GLASS SPLASHBACK
- ✓ WINE RACK WITH OPEN SHELF
- ✓ ENTERTAINER ALFRESCO DOORS
- ✓ FEATURE STAIRCASE BALUSTERS
- ✓ ALARM SYSTEM WITH MOTION DETECTORS
- ✓ REMOTE CONTROLLED GARAGE DOOR
- ✓ SLIDE RAIL TO BATHROOM SHOWER

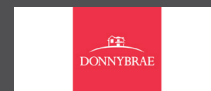
Portland 25

Lot 715 (392m²) Donnybrae, DONNYBROOK



FOR ENQUIRIES CONTACT:

Mark Sinnott m: 0402 194 034 | w: carlislehomes.com.au
Or visit: Donnybrae, 875 Donnybrook Road, DONNYBROOK VIC 3064



*Fixed Price current as of 17/04/2019. Hebel homes may be smaller than dimensions shown on the floorplan due to the external wall thickness, see working drawings for Hebel home dimensions. Confirm land prices and availability prior to purchase. Community Infrastructure Levy & Asset Protection not included in pricing and must be arranged directly by client with developer (where applicable). Subject to developer & council approval. Package Price does not include any costs associated with Developer's Corner Facade treatment requirements (which will be priced by Carlisle Homes by way of Post Contract Variation), stamp duty, government, legal or bank charges. Alterations may incur additional charges. Carlisle reserves the right to withdraw or amend pricing, inclusions and promo without notice. **The Bigger Deal offer applies to new quotes and initial deposits on Carlisle's T-Range Collection homes from 13 April 2019 and is available only in conjunction with the T-Range Bigger Deal Inclusions brochure. See a Sales Consultant or visit carlislehomes.com.au/disclaimer/ for further details. © 2019 Carlisle Homes Pty Ltd.